

2005 CMDC

Late Season Clinic –

Tamra Jackson

Use & Copyright

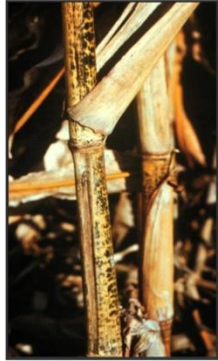
The materials in this document were developed by and for use by University of Nebraska–Lincoln Extension in the Institute of Agriculture and Natural Resources. The materials are copyrighted by the Board of Regents of the University of Nebraska–Lincoln on behalf of the University of Nebraska–Lincoln Extension. All rights are reserved.

Copies may be printed for individual personal use; however, these materials can not be republished in print, on another Web site or used commercially without prior written permission. To seek permission to print a publication for educational use, please email us at dpittman1@unl.edu.

Disclaimer

Reference to commercial products or trade names in these publications is made with the understanding that no discrimination is intended and no endorsement by University of Nebraska-Lincoln Extension is implied.

Anthracnose Stalk Rot



- **3 phases**
 - Leaf blight
 - Top die back
 - Stalk rot
- **Shiny black lesions**
- **20-35% yield loss**
- **Resistance**

2005CMDC-Jackson001

Gibberella Stalk and Ear Rot



- ***Gibberella zeae***
- Red pigmentation
- Black perithecia
- Mycotoxin



- **Cool, wet weather**
- **Resistance**

2005CMDC-Jackson002

Fusarium Stalk and Ear Rot



- ***Fusarium spp.***
- **Pink pigmentation**
- **Starburst patterns on kernels**



- **Hot, dry weather**
- **Fumonisin toxin**

2005CMDC-Jackson003

Diplodia Stalk and Ear Rot



- **Wet weather after silking**

- ***Stenocarpella maydis***

- **Base of ear**

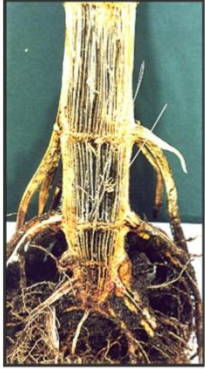
- **Mummy ears**

- **Black pycnidia**



2005CMDC-Jackson004

Charcoal Rot



- **Warm, dry weather**
- *Macrophomina phaseolina*
- **Black sclerotia**
- **Wide host range**

2005CMDC-Jackson005

Bacterial Stalk Rot



- **Midseason**

- **Wide host range**



- **Surface water irrigation**

- **Foul odor!**

2005CMDC-Jackson006