

# 2009 CMDC

# Tamra Jackson

#### **Use & Copyright**

The materials in this document were developed by and for use by University of Nebraska–Lincoln Extension in the Institute of Agriculture and Natural Resources. The materials are copyrighted by the Board of Regents of the University of Nebraska–Lincoln on behalf of the University of Nebraska–Lincoln Extension. All rights are reserved.

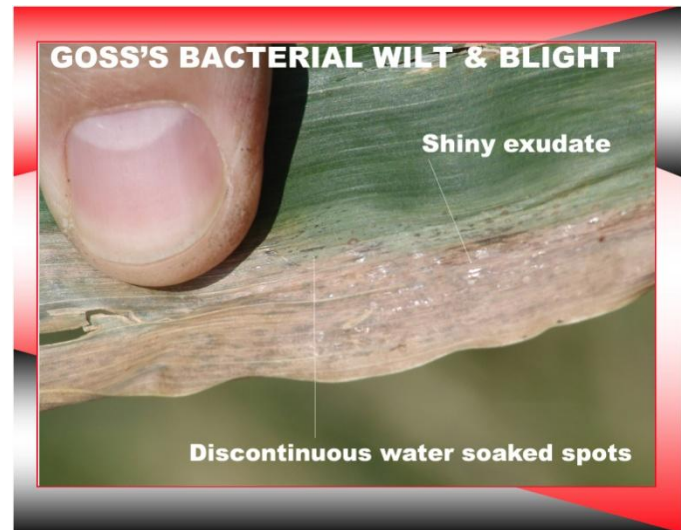
Copies may be printed for individual personal use; however, these materials can not be republished in print, on another Web site or used commercially without prior written permission. To seek permission to print a publication for educational use, please email us at [dpittman1@unl.edu](mailto:dpittman1@unl.edu).

#### **Disclaimer**

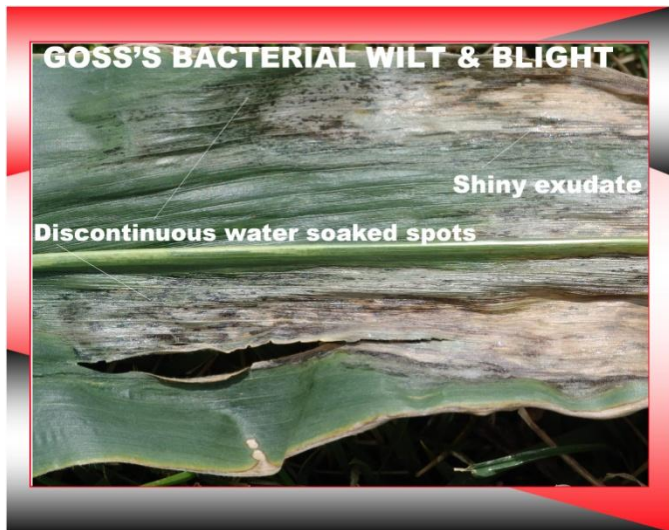
Reference to commercial products or trade names in these publications is made with the understanding that no discrimination is intended and no endorsement by University of Nebraska-Lincoln Extension is implied.



2009CMDC-Jackson001



2009CMDC-Jackson002

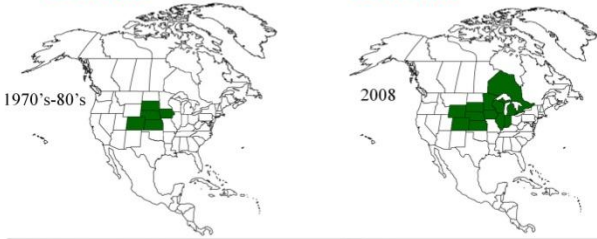


2009CMDC-Jackson003

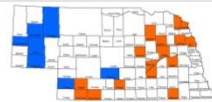


2009CMDC-Jackson004

- **Discovered 1969 Dawson Co. NE**
- **2008 – 11 States in Midwest and Canada**



- **Confirmed Counties in NE since 2005**



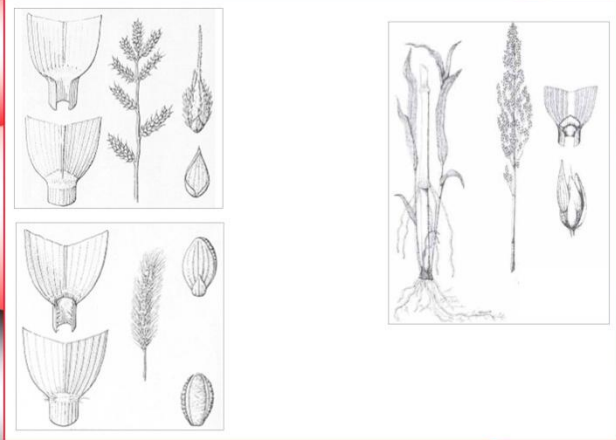
2009CMDC-Jackson005

### **SOME POSSIBLE REASONS FOR DISEASE RE-EMERGENCE**

- **Changes in pathogen**
- **Less resistance**
- **Continuous corn**
- **Alternate hosts**
- **Conservation tillage practices**



2009CMDC-Jackson006



2009CMDC-Jackson007