

2010 SMFD

Managing New and Emerging Diseases, Insects & Weed Problems – GIESLER

Use & Copyright

The materials in this document were developed by and for use by University of Nebraska–Lincoln Extension in the Institute of Agriculture and Natural Resources. The materials are copyrighted by the Board of Regents of the University of Nebraska–Lincoln on behalf of the University of Nebraska-Lincoln Extension. All rights are reserved.

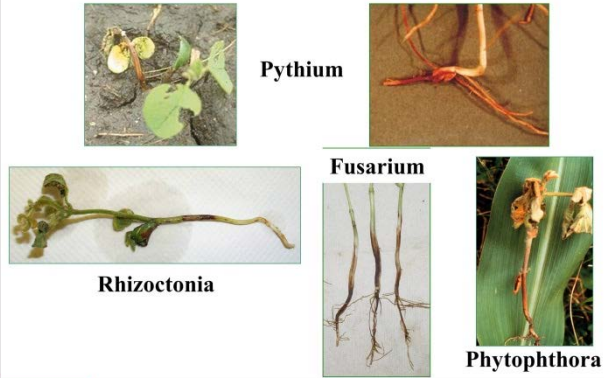
Copies may be printed for individual personal use; however, these materials can not be republished in print, on another Web site or used commercially without prior written permission. To seek permission to print a publication for educational use, please email us at dpittman1@unl.edu.

Disclaimer

Reference to commercial products or trade names in these publications is made with the understanding that no discrimination is intended and no endorsement by University of Nebraska-Lincoln Extension is implied.

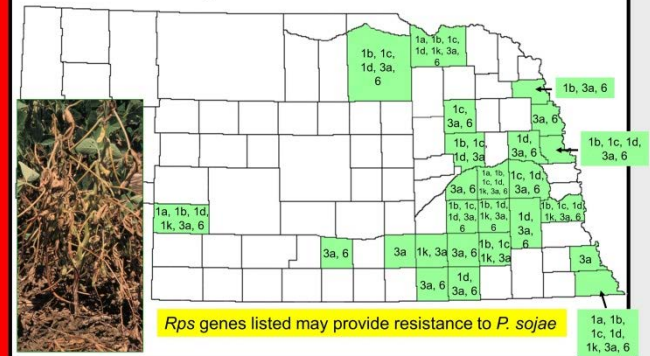
Copyright 2010 University of Nebraska-Lincoln Extension

Fungal Seedling Diseases



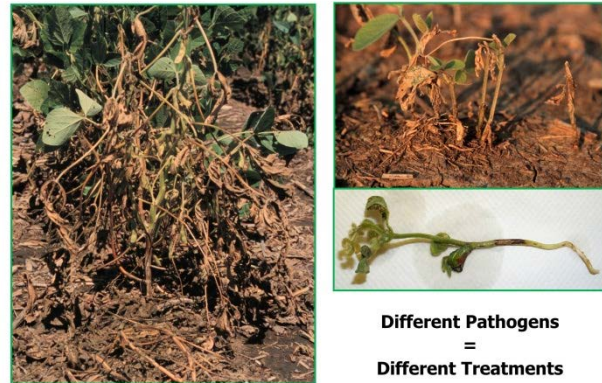
2010SMFD-GIESLER (1)

Distribution of *Phytophthora sojae* in Nebraska



2010SMFD-GIESLER (2)

Keep Records on Each Field



2010SMFD-GIESLER (3)

Phytophthora Root and Stem Rot



- Resistant varieties: specific race resistance and tolerance (most rated to Race 25)
- Fungicides (metalaxyl and mefenoxam) require increased rates
- Improve field drainage

2010SMFD-GIESLER (4)

Sudden Death Syndrome (SDS)



Management

- Avoid early planting
- Variety selection
- Seed treatments have not shown to be effective.

2010SMFD-GIESLER (5)