

2005 Solution Days

Barriers & Rust

Use & Copyright

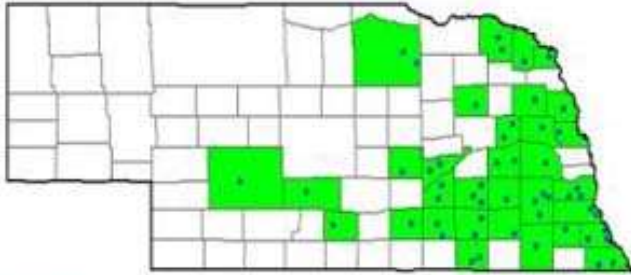
The materials in this document were developed by and for use by University of Nebraska–Lincoln Extension in the Institute of Agriculture and Natural Resources. The materials are copyrighted by the Board of Regents of the University of Nebraska–Lincoln on behalf of the University of Nebraska–Lincoln Extension. All rights are reserved.

Copies may be printed for individual personal use; however, these materials can not be republished in print, on another Web site or used commercially without prior written permission. To seek permission to print a publication for educational use, please email us at dpittman1@unl.edu.

Disclaimer

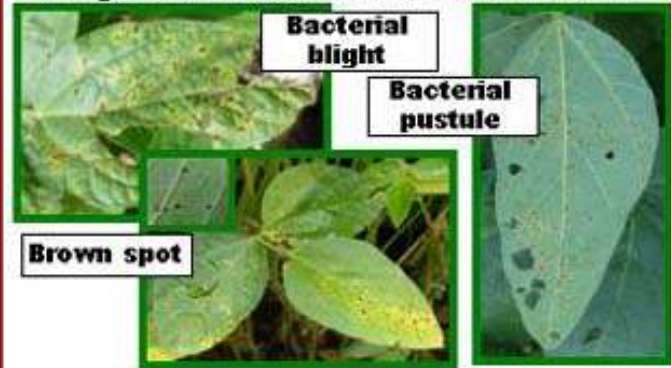
Reference to commercial products or trade names in these publications is made with the understanding that no discrimination is intended and no endorsement by University of Nebraska-Lincoln Extension is implied.

Soybean Rust: Sentinel Plots



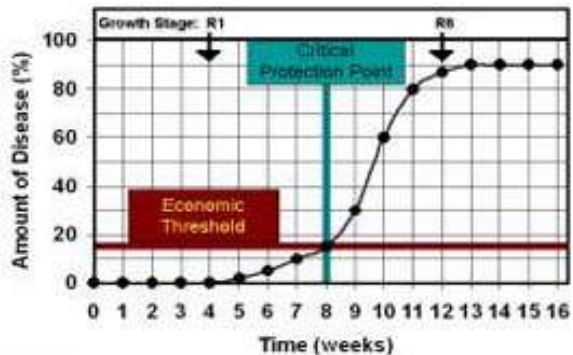
05cmdc-giesler005

Soybean Rust Identification



05cmdc-giesler006

Disease Progress Curve



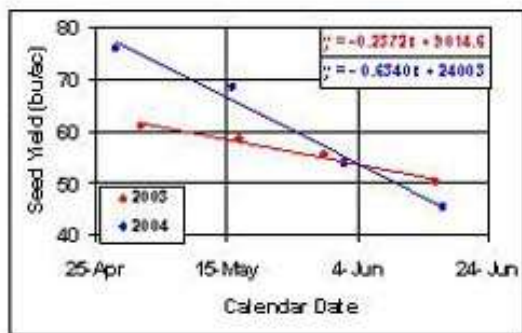
05cmdc-giesler007

Soybean Rust Management

- **Fungicides: Aerial, Ground, Chemigation**
- **Scouting: Timing is Critical**
- **Planting date / Maturity**

05cmdc-giesler008

Plant Early - Optimize Yield



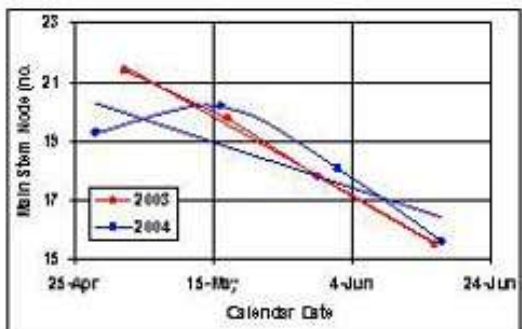
05cmdc-specht001

Plant Early - More Seed/Area



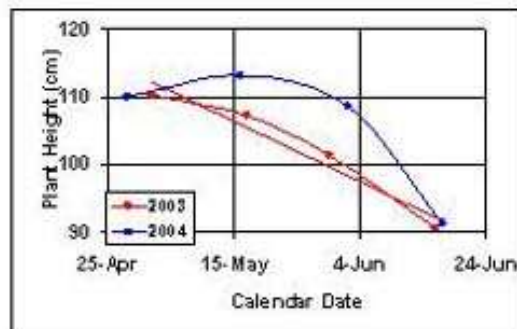
05cmdc-specht002

Plant Early - More Nodes



05cmdc-specht003

Plant Early - Crop Height Effect



05cmdc-specht004

Plant Early – More Crop Season

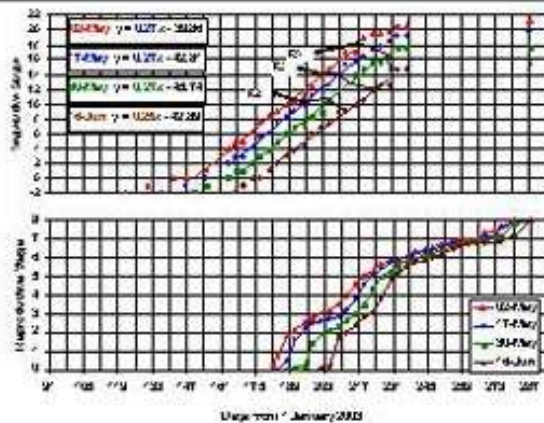


05cmdc-specht005

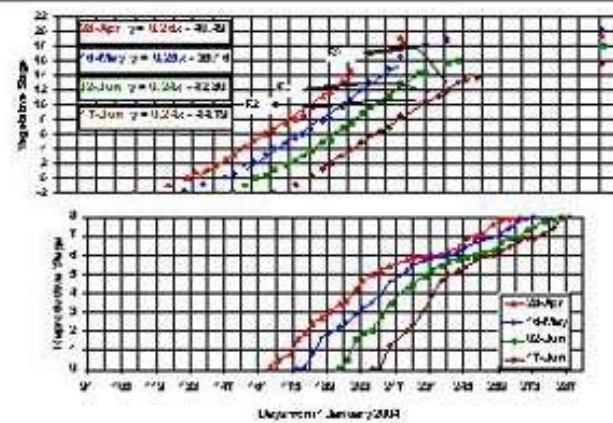
Plant Early – But Do It Right!

- Know the calendar date of last-ever spring frost for your area.
- Plant no earlier than 14 days prior to that calendar date.
- Use a variety with slightly later flowering (i.e., later maturing).
- Use high quality seed treated with a fungicide & insecticide!

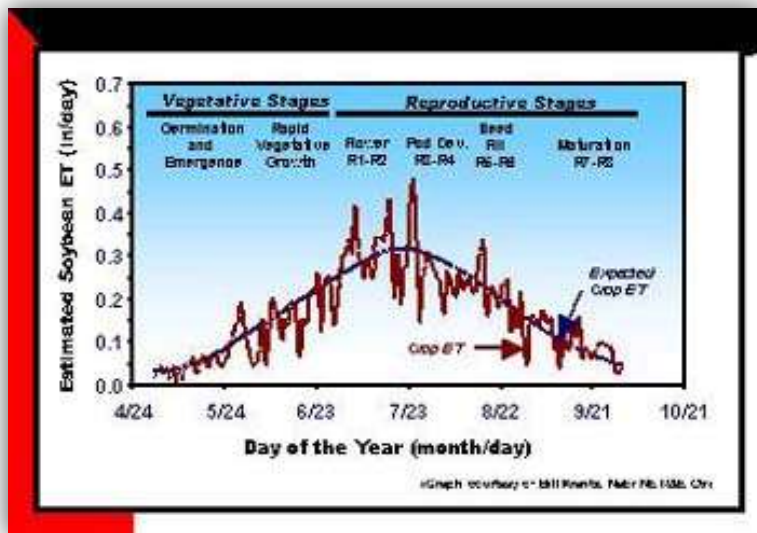
05cmdc-specht006



05cmdc-specht007



05cmdc-specht008



05cmdc-specht009

Hard-Core Soybean Irrigation Questions

1. If you produce both Irrigated Corn and Irrigated Soybean and your Corn Yield / Soybean Yield Ratio is not equal to 3.25 (examples: 175/53.8; 200/61.5; 225/69.2; 250/76.9; 275/84.6; 300/92.3; 325/100), then you are mistreating one or the other crop. *Which one do you usually mistreat?*

05cmdc-specht010

Management Issues

- ▶ Air vs. ground
- ▶ Aphid resurgence
- ▶ Herbicide tank-mix
- ▶ Fungicide tank-mix

05smfd-aphidrust-a

Soybean Rust: Current Status



05smfd-aphidrust-b