

# 2009 CMDC

## In-Depth Soybean Cyst

## Nematode Management –

## Loren Giesler

### Use & Copyright

The materials in this document were developed by and for use by University of Nebraska–Lincoln Extension in the Institute of Agriculture and Natural Resources. The materials are copyrighted by the Board of Regents of the University of Nebraska–Lincoln on behalf of the University of Nebraska–Lincoln Extension. All rights are reserved.

Copies may be printed for individual personal use; however, these materials can not be republished in print, on another Web site or used commercially without prior written permission. To seek permission to print a publication for educational use, please email us at [dpittman1@unl.edu](mailto:dpittman1@unl.edu).

### Disclaimer

Reference to commercial products or trade names in these publications is made with the understanding that no discrimination is intended and no endorsement by University of Nebraska-Lincoln Extension is implied.

## Soybean Cyst Nematode

21 New Counties Identified (2005 - 2009)



2009CMDC-Giesler001

## WEED HOSTS

### Most Common:

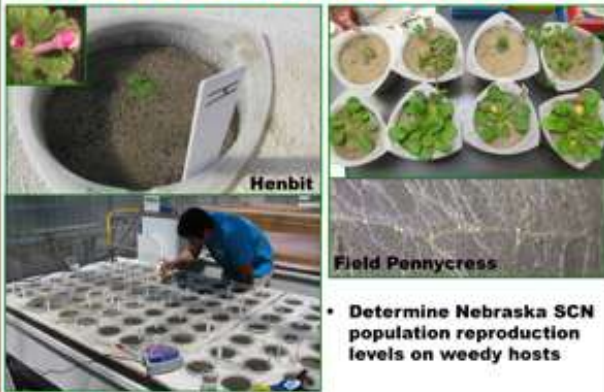
- Henbit\*, Field Pennycress\*, Purslane
- Common Chickweed\*, Common Mullein, Pokeweed, Sericea Lespedeza, Wild Mustard\*
- \* - may grow as a winter annual

### Management:

- SCN-infested fields with the weeds listed above should be considered a priority for weed control measures.

2009CMDC-Giesler002

## Winter Annual Weed Hosts



2009CMDC-Giesler003

**\$25 Million...**

How Much Did  
**YOU**  
Contribute?

Nebraska  
Lincoln



2009CMDC-Giesler004

## UNL SCN RESEARCH

*2006 - 2008*

### Ave. yield: 12 infested sites

- Resistant varieties: **51.9 bu/A**
- Susceptible varieties: **46.1 bu/A**

### Ave. yield: 4 non-infested sites

- Resistant varieties: **57.1 bu/A**
- Susceptible varieties: **58.8 bu/A**

2009CMDC-Giesler005

## UNL SCN RESEARCH

*2006 - 2008*

### Egg counts at 12 infested sites

*(eggs per 100 cc's of soil)*

### Egg count: susceptible varieties

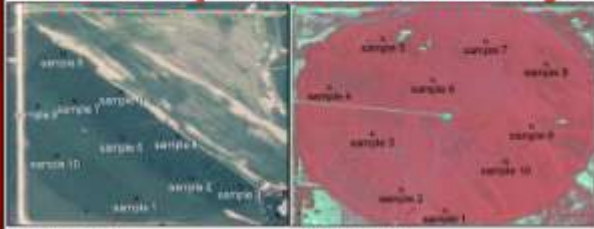
- Spring: **1,964 eggs**
- Fall: **4,515 eggs + 130%**

### Egg count: resistant varieties

- Spring: **2,578 eggs**
- Fall: **1,318 eggs - 49%**

2009CMDC-Giesler006

# Field Population Variability



Sample #	Population	Sample #	Population
1	500	1	500
2	200	2	100
3	400	3	200
4	700	4	200
5	0	5	100
6	1000	6	800
7	100	7	200
8	200	8	200
9	0	9	200
10	500	10	500

2009CMDC-Giesler007