

2009 CMDC

Bill Kranz - Response of Corn Water Use to Limited Water

Use & Copyright

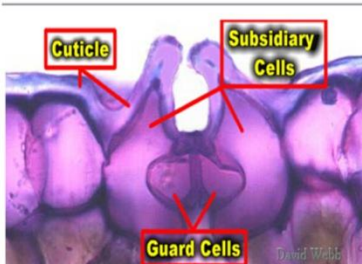
The materials in this document were developed by and for use by University of Nebraska–Lincoln Extension in the Institute of Agriculture and Natural Resources. The materials are copyrighted by the Board of Regents of the University of Nebraska–Lincoln on behalf of the University of Nebraska-Lincoln Extension. All rights are reserved.

Copies may be printed for individual personal use; however, these materials cannot be republished in print, on another Web site or used commercially without prior written permission. To seek permission to print a publication for educational use, please email us at dpittman1@unl.edu.

Disclaimer

Reference to commercial products or trade names in these publications is made with the understanding that no discrimination is intended and no endorsement by University of Nebraska-Lincoln Extension is implied.

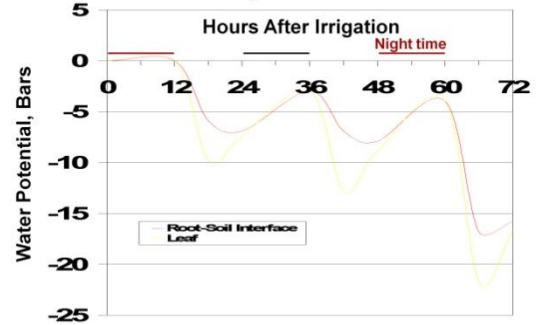
Stomatal Control Varies with Hybrids



Loss of Turgor Pressure Causes Guard Cells to Relax

2009CMDC-Kranz001

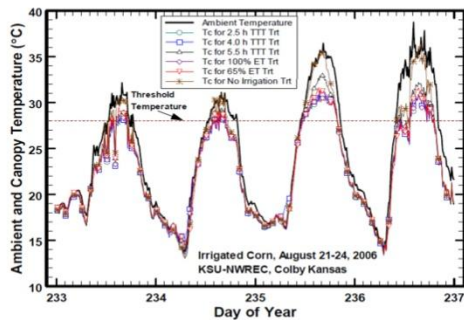
Trend in Water Potential After Irrigation



Li, et al., 2002

2009CMDC-Kranz002

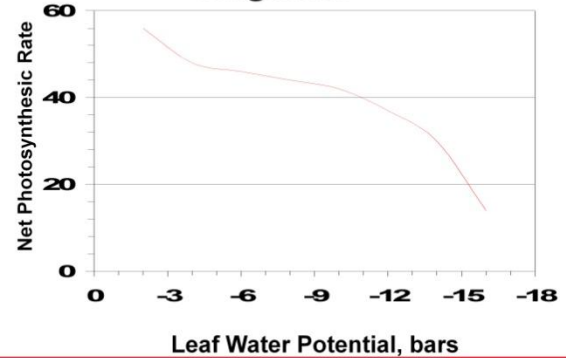
Corn Canopy Temperature Time Thresholds



Lamm & Aiken, 2008

2009CMDC-Kranz003

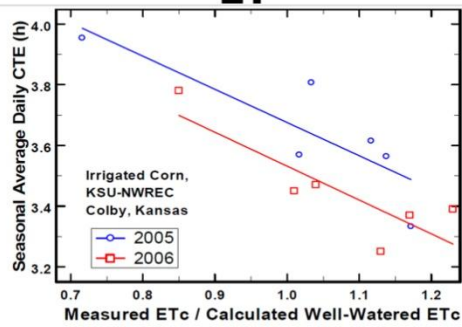
Trend in Water Potential After Irrigation



Boyer, 1970

2009CMDC-Kranz004

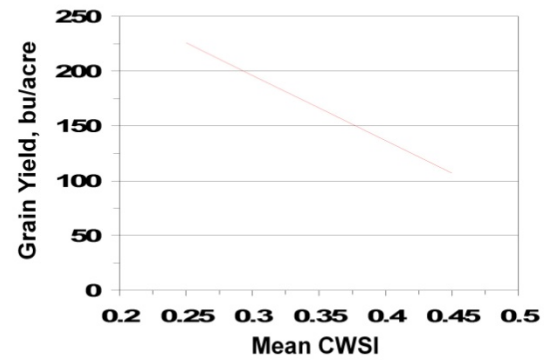
Hours of Stress Reduce Crop ET



Lamm & Aiken, 2008

2009CMDC-Kranz005

Average CWSI Impact on Yield



2009CMDC-Kranz006