

2011 CMDC

Getting the Most from Fungicides on Corn & Soybeans

Jackson

Use & Copyright

The materials in this document were developed by and for use by University of Nebraska–Lincoln Extension in the Institute of Agriculture and Natural Resources. The materials are copyrighted by the Board of Regents of the University of Nebraska–Lincoln on behalf of the University of Nebraska-Lincoln Extension. All rights are reserved.

Copies may be printed for individual personal use; however, these materials cannot be republished in print, on another Web site or used commercially without prior written permission. To seek permission to print a publication for educational use, please email us at dpittman1@unl.edu.

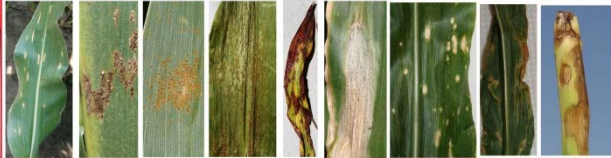
Disclaimer

Reference to commercial products or trade names in these publications is made with the understanding that no discrimination is intended and no endorsement by University of Nebraska-Lincoln Extension is implied.

2011 University of Nebraska-Lincoln Extension CMDC

Accurate Diagnosis is Critical

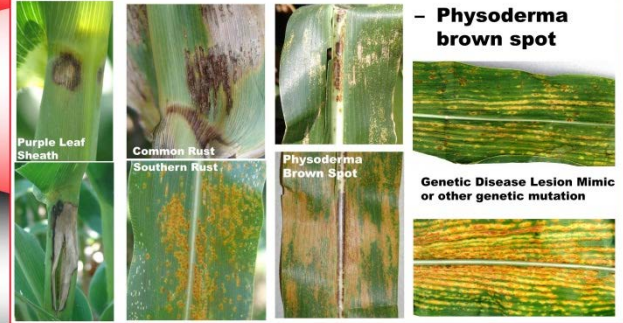
- Fungal Diseases**
 - can be managed with foliar fungicides
 - Gray leaf spot
 - Common rust
 - Southern rust
 - Eyespot
 - Anthracnose
- Bacterial Diseases**
 - **CAN'T** be managed with foliar fungicides
 - Goss's wilt & blight
 - Holcus spot
 - Chocolate spot
 - Erwinia stalk rot



2011JacksonCornEar (1)

Accurate Diagnosis is Critical

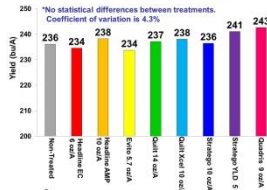
- Differentiating difficult diseases**
 - Purple leaf sheath
 - Genetic disease lesion mimic
 - Common rust
 - Southern rust
 - Physoderma brown spot



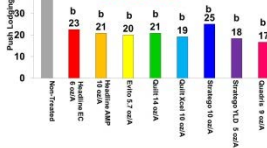
2011JacksonCornEar (2)

Effects of Fungicides

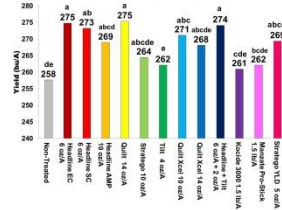
2010 - Yield - DKC 61-69



2010 - Lodging DKC 61-69



2009 - Yield - DKC 60-18

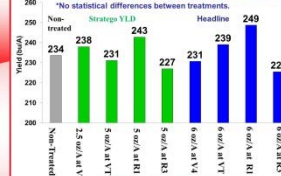


- **Reduced disease**
 - Slowed progression
- **Increased yield**
 - Substantial disease
- **Improved standability**

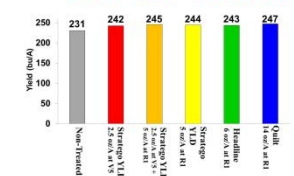
2011JacksonCornEar (3)

Fungicide Application Timing

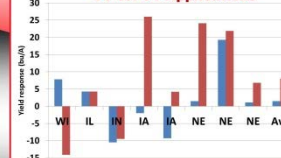
2010 - Yield - DKC 61-69



2010 - Yield - DKC 61-69



5-State Summary V6 vs. VT Applications



- **Reduced disease**
 - Slowed progression
- **Increased yield**
 - Substantial disease
- **Improved standability**

2011JacksonCornEar (4)