

Crop Management Diagnostic Clinics

Schmidt

Use & Copyright

The materials in this document were developed by and for use by University of Nebraska–Lincoln Extension in the Institute of Agriculture and Natural Resources. The materials are copyrighted by the Board of Regents of the University of Nebraska–Lincoln on behalf of the University of Nebraska-Lincoln Extension. All rights are reserved. Copies may be printed for individual personal use; however, these materials cannot be republished in print, on another Web site or used commercially without prior written permission. To seek permission to print a publication for educational use, please email us at dpittman1@unl.edu.

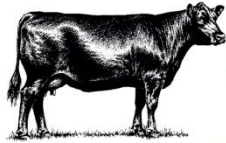
Disclaimer

Reference to commercial products or trade names in these publications is made with the understanding that no discrimination is intended and no endorsement by University of Nebraska-Lincoln Extension is implied.

© 2013 University of Nebraska–Lincoln

Feedlot Nitrogen Fate

Up to 70% N loss from lot in summer (45% loss in winter)



20% N loss from holding pond



25% N loss from sprinkler application



20-25% N loss from stockpiled manure



2013CMDC-Schmidt (1)

Conserving Nitrogen

Frequent pen cleaning (reduce loss by 13-18%)

Addition of carbon source (varies by time of year)

Maintain surface moisture in lot during dry periods

Dietary modifications

Incorporate manure within 24 h (limit loss to <5%)

Inject liquid manure (reduce loss 50% or more)

2013CMDC-Schmidt (2)