

# **2014 Soybean Management Field Days**

## **Irrigation**

### **Use & Copyright**

The materials in this document were developed by and for use by University of Nebraska–Lincoln Extension in the Institute of Agriculture and Natural Resources. The materials are copyrighted by the Board of Regents of the University of Nebraska–Lincoln on behalf of the University of Nebraska-Lincoln Extension. All rights are reserved.

Copies may be printed for individual personal use; however, these materials can not be republished in print, on another Web site or used commercially without prior written permission. To seek permission to print a publication for educational use, please email us at [dpittman1@unl.edu](mailto:dpittman1@unl.edu).

### **Disclaimer**

Reference to commercial products or trade names in these publications is made with the understanding that no discrimination is intended and no endorsement by University of Nebraska-Lincoln Extension is implied.

Copyright 2014 University of Nebraska-Lincoln Extension

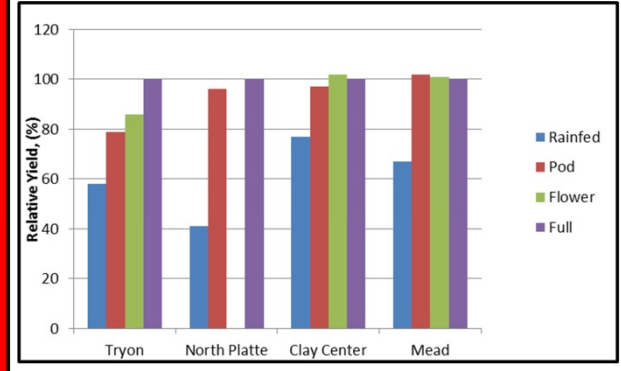
# Crop coefficient (Kc)

Table 1. Alfalfa-based crop coefficients (Kc) at the beginning of each growth stage for corn, soybean, and wheat (High Plains Regional Climate Center, 2005).

Corn		Soybean		Wheat	
Growth Stage	Kc	Growth Stage	Kc	Growth Stage	Kc
2 leaves	0.10	Cotyledon	0.10	Emergence	0.10
4 leaves	0.18	First Node	0.20	Visible Corn	0.50
6 leaves	0.35	Second Node	0.40	Leaf Elongation	0.90
8 leaves	0.51	Third Node	0.60	Jointing	1.03
10 leaves	0.69	Beginning Bloom	0.90	Root	1.10
12 leaves	0.88	Full Bloom	1.00	Heading	1.10
14 leaves	1.01	Beginning Pod	1.10	Flowering	1.10
16 leaves	1.10	Full Pod	1.10	Cross Fall	1.10
Silking	1.10	Beginning Seed	1.10	Stiff Dowel	1.00
Ripener	1.10	Full Seed	1.10	Ripening	0.50
Drop	1.10	Beginning Maturity	0.90	Mature	0.10
Beginning dent	1.10	Full Maturity	0.20		
Black layer	0.98	Mature	0.10		
Full maturity	0.60				
	0.10				

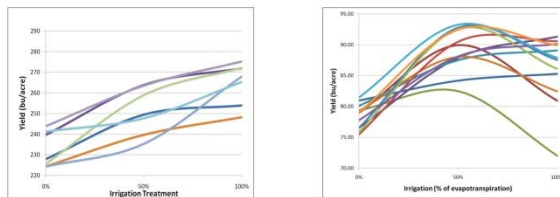
2008CMDCKranz004

# Yields by Irrigation Strategy



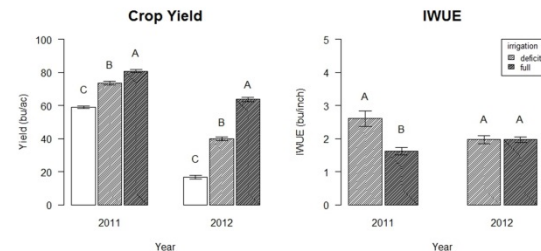
2014SMFDStoryboards-IRRIGATION.jpg (1)

# Monsanto Water Utilization Learning Center 2010 – Corn Soybeans



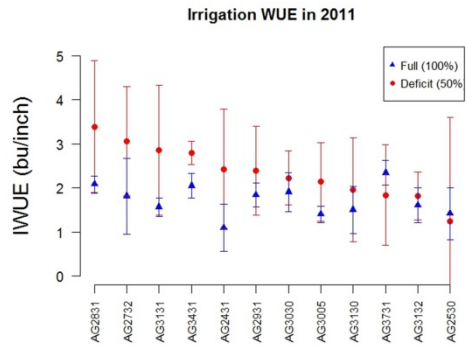
2014SMFDStoryboards-IRRIGATION.jpg (2)

# Irrigation Treatments: Yield, WUE



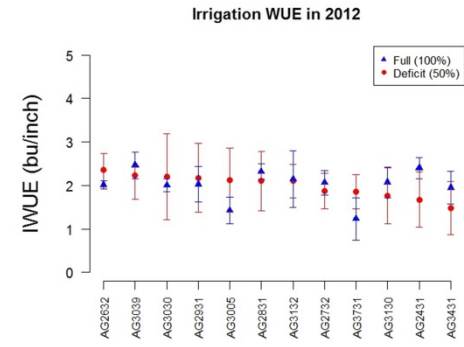
2014SMFDStoryboards-IRRIGATION.jpg (3)

## Soybean Varieties: IWUE



2014SMFDStoryboards-IRRIGATION.jpg (4)

## Soybean Varieties: IWUE



2014SMFDStoryboards-IRRIGATION.jpg (5)

## UNL Irrigation Apps



Crop Water



Water Meter Calculator



Irrigation Pumping Plant



Agriculture Irrigation Costs

2014SMFDStoryboards-IRRIGATION.jpg (6)